

Jesus said "I am the good shepherd. The sheep hear the shepherd's voice and he leads them. They follow him because they know his voice."

John 10:11,3-4

# The Shepherd's Voice

## SUNDAYS AT GOOD SHEPHERD

**2 Worship Services  
of Holy Communion**

8:15 and 11:00 AM

See page 2

*Childcare offered all morning*

**Sunday Church School,  
High School and Adult Forums**

9:45-10:45 AM



**November 2010**

### All Saint's Sunday

**November 7.** In Holy Baptism God makes saints out of sinners. In Holy Communion God forgives the sins of all the saints. During worship we will give thanks for all the saints "who from their labors rest," and we will lift up the names of the saints, our loved ones, who have died since last All Saints' Sunday, November 1, 2009. In order to include the name of a loved one in the prayers during worship on All Saints' Sunday, please sign up on the kiosk or call the church office and speak to Susan by Tuesday, November 2.



**Prayers of Remembrance in the Memorial Garden.** Please join us in the Memorial Garden on Sunday, November 7 at 9:30 AM, when we gather for Prayers of Remembrance of loved ones whose ashes have been interred in the garden.

### New Members Received

#### Sunday, November 14

Join us as we welcome our newest members into GSLC's faith community during both worship services. Be sure to greet them after worship over coffee and goodies.

### Thanksgiving Eve Worship And Pie Nite!

Join us on Thanksgiving Eve, **Wednesday, November 24, 7:30 PM**, when we gather to give thanks to God for all his many blessings on us and our nation.

Then stay and enjoy a slice or two of home made pie lovingly prepared by members of GSLC. What a great way to begin the holiday weekend! If you wish to donate a pie, please sign up on the kiosk. Many thanks!



### First Sunday in Advent

#### November 28 – First Sunday in Advent

Begin your preparations for Christmas with worship..

Make an Advent Wreath at 9:30 AM.

See pages 3 and 4 for preparing for Christmas.



### Inside this edition

#### Sundays and Special Services

Sundays at Good Shepherd, Hospice Memorial Service, Choir Workshop 2

#### Preparing for Advent and Christmas.

3-4

#### Congregation Council News

Updates from the Council & Finance, Natural Church Development 5

#### Caring for others

Women Serving Women, Clothing Drive Update, Thrivent Choice® \$\$\$, Lyons VA Hospital Visits, Coats for Vets, IHN 6-7

#### Learn and Discuss

Adult Forums, New Book Discussion, Diakonia Course, Bible Study 8

#### Gathering and Supporting

Main Street Ministry, Christmas shows and luncheons, Women gather to serve preparing packages and creating gifts 9-10

#### Young Children and Families

Day Care News, Little Lights new meeting day, "Love Came Down at Christmas" 10

#### H2H Confirmation Ministry (Gr. 7-9)

11

#### Senior High Ministry

11

#### Our Church Family

12

#### Calendar

13

#### Worship Stewards

14

Mission Statement: Forgiven by God's grace and led by God's love, We are:

+ Gathered to worship and learn + Strengthened to follow Christ and + Equipped to serve...For the sake of the world.

## Sundays at Good Shepherd

8:15 and 11:00 AM Worship Services  
9:45 AM Sunday Church School and  
High School / Adult Forums

### Sunday, November 7

Luke 6:20-31 - Jesus speaks blessings and woes

- ✝ All Saints Sunday
- ✝ 9:30 Prayers of Remembrance in the Memorial Garden
- ✝ 4:00 PM Compassionate Care Hospice Memorial Service

### Sunday, November 14

Luke 21:5-19 - Suffering for Jesus' Sake

- ✝ New Members Received
- ✝ Prayers for Healing
- ✝ Sending Communion Ministers
- ✝ 1:15 PM Arbor Glen Worship (pg 7)

### Sunday, November 21

Luke 23:33-43 - Jesus crucified with two thieves

- ✝ Grace *Alive!* Worship

### Sunday, November 28

Matthew 28:36-44 - Sudden coming of salvation

- ✝ The First Sunday of Advent
- ✝ 9:30 AM - Advent Wreath Making (pg 3)

### Sunday, December 5 -

Matthew 3:1-12 - Prepare the way of the Lord

- ✝ The Second Sunday of Advent
- ✝ 6:30 PM—H2H Gr. 9 Angel Tree (pg 3)
- ✝ 5:30 PM—7 & 8 Graders Shopping for Toys for Somerset Jail Chaplaincy (pg 4)

## Hospice Memorial Service ~ Sunday, November 7, 4:00 PM.

Compassionate Care Hospice will be offering their annual Memorial Service at GSLC.



Members from Good Shepherd are welcome to join the families and friends gathering to remember their loved ones who died this past year while under hospice care. A time for conversation and refreshments will immediately follow the service.

## CHOIR WORKSHOP

Saturday, November 20, 3:00 PM in  
Luther Hall



Stephanie Bricton, musical director of the Jersey Sound Chorus of Sweet Adelines International will be joining us on the 20<sup>th</sup> for a choral singing workshop.

*Grace Alive!* singers and cantors are welcome to join in as we refresh and refine our vocal techniques.

Workshop will be followed by a pot luck supper. Cost is \$5 per person, plus your meal contribution.

See Debbie Gelormine for more info.

## Looking ahead:

### Christmas Eve Worship

Friday, December 24,

### 3 Services with Holy Communion

5:00 PM - Family Candlelight Service

8:30 and 11:00 PM - Candlelight Service

An organ concert begins a half-hour before each service.



### Sunday, December 26

### Worship Services at 8:15 and 11:00 AM

Service of Lessons and Carols with Holy Communion  
No Sunday Church School - No Adult Forum



**Don't forget to set your  
clocks back  
Sunday, November 7  
at 2:00 AM.**

**Newsletter  
DEADLINE**

Newsletter articles for next issue are  
**Due Sunday, November 14**

This issue will cover December 5 to January 1.



## Advent Wreaths

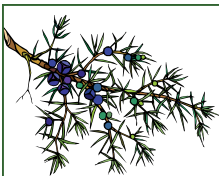
November 28 – First Sunday in Advent,  
9:30 - 10:45 AM in the Narthex

Make an Advent wreath for your home  
or for one of our homebound members

Bring a pair of clippers.

We'll provide greens, forms, candles and holders.

Cost: \$10.



## Evergreens Wanted!

Do you have any unusual  
evergreen bushes or trees...  
for example: holly, euyonomous,  
boxwood, juniper, yew, arborvitae, cypress. We  
need the branches!

We will be making Advent wreaths on Sunday,  
November 28. Please contact Lynda Pullis via e-  
mail at [lynda@gslutheranchurch.org](mailto:lynda@gslutheranchurch.org) or by phone at  
908-685-1660 ext. 21 if you have greens to share.

## Christmas Plants and Memorials

Donations for Christmas poinsettias,  
wreaths, and pine roping to decorate the  
church or monetary gifts to the Memo-  
rial Fund may be given in celebration of  
Christ's birth. Cost: \$12. Gifts may be made in mem-  
ory of or in thanksgiving of loved ones.

Please use the white "Flowers and Plants" envelopes  
available in pew racks and the Welcome Center. If you  
need an envelope mailed to you, please contact the  
church office. You may mail your gift to the church of-  
fice. Deadline is **Sunday, November 28.**



## The Living Nativity

Come see The Living Nativity  
This year with a live camel and donkey!

**Two performances on  
Saturday December 18  
5:00 PM and 7:00 PM  
on the church lawn**

Good Shepherd's wonderful Christmas  
tradition continues this year with our out-  
door enactment of the Christmas Story.

**Hear** the beautiful words of the birth of  
our Savior.

**Sing** hymns proclaiming the joy of his coming.

**See** Mary, Joseph, shepherds and the Three Kings as  
they travel to Bethlehem with their live animals  
(including sheep, goats, rabbits, a donkey and a  
camel!)

**Rejoice** as all the characters of the manger scene ap-  
pear before you eyes.

**Warm** your spirit with God's Word during the per-  
formance. Warm your body with cocoa and cookies  
afterwards inside the church.

**Prepare** for a happy and Christ-centered Christmas.

Cast, crew members, refreshment hosts and bakers are  
already being gathered. If you are interested in par-  
ticipating in any way, please sign up on the sheet in  
the Narthex or contact Ellen Parker. All adults and  
young people 5th grade and up are welcome!

A walk-through and costume fitting for everyone  
will be on **Sunday, December 12 at 12:30 PM.**

## Worship Steward Scheduling Christmas Season 2010

Please sign up on the kiosk for worship  
steward duties for upcoming Christmas services.  
This gives you the opportunity to choose when you  
would like to serve instead of being assigned,  
discovering you are unavailable, and then scrambling  
to find a substitute. After reviewing the sign-up sheet,  
we will then fill in any blanks by assigning  
individuals based on their availability.

We'll send you a reminder of what you've committed  
to in December as we draw closer to the holidays.  
Thank you in advance!



# Preparing to Share with others



## Gift Ministry

The Angel Tree benefits families from the Resource Center for Women, the Somerset Home for Temporarily Displaced Children, as well as our church and local area.

Gift tags are available **Sunday, November 14.**

The tree in the Narthex will have tags of what individuals are asking for. Please consider selecting a tag, purchasing the gift, and dropping it off at the church under the tree with the tag attached.

Our support is always greatly appreciated.

Gifts should be *unwrapped*, but donations of wrapping supplies are also needed.

Gifts are due back by **Sunday, December 5.**

*This project is supported by a Thrivent grant.*

## Christmas Toys For Children of Somerset County Jail Residents



Sponsors: Lutheran Men in Mission (LMM) (page 10)

Toys are donated to the Somerset Jail Chaplaincy, where they will be distributed to children of inmates during the Christmas season.

How can you help?

- Make a monetary contribution using the **blue “Extra Mile Giving”** envelopes available in the pew racks and welcome center, specify use as “Toys”. Make checks payable to GSLC.
- Purchase a new, non-violent, unwrapped toy in the \$5 - \$25 price range – leave new toys in the marked bin in the Narthex by **Sunday, November 28.**

On December 5, youth will have their annual *Toys R Us* Shopping Spree to purchase these gifts.

*This project is supported by a Thrivent grant.*

## Thanksgiving and Christmas Food Baskets



Each year at Thanksgiving and Christmas, we help at least 15 needy families within the church and local community by providing a week's supply of food and basic household necessities.

How can you help?

### DONATE FOOD

Take grocery bags with a list of the items needed and bring it back filled up!

### DONATE MONEY

Monetary gifts are used to purchase turkeys and other perishables. Use the blue “Outreach/Extra Mile Giving” envelopes and indicate “Food Basket”.

**DONATE A TURKEY**—call Rosely LaFever.

### HELP ASSEMBLE AND DELIVER BASKETS

**Saturday, November 20 at 9:00 AM.** Please sign up on the kiosk. If you are willing to deliver a basket over the weekend but cannot come that morning, please note that on the sign-up sheet.

*This project is supported by a Thrivent grant.*

## College Student Care Packages Reminder

Help us fill 40 packages to be sent to Good Shepherd students away at college during exam time.

Check the kiosk for a sign-up sheet for goodies.

Please put these items in the basket in the Narthex on **Sunday, November 28.**



**PARENTS:** please forward current addresses of your college students to [susan@gslutheranchurch.org](mailto:susan@gslutheranchurch.org)

Sponsored by “Daughters of Eve” (page 9)

## Our Congregation Council at its October 12 Meeting ...



- received letters of thanks from Lutheran Social Ministries, IHN, West End Hose Company of Somerville, and Michael Groemm for our support and donations.
- was charged with submitting ministry team spending plan drafts for 2011 to the chair of Finance by November 1, 2010.
- heard more details about the Thrivent Choice program from Judy Pfister, and agreed that gifts will be used for Luther Hall enhancements.
- heard an update on the Natural Church Development process.
- was reminded of the next property work day on Saturday, October 23 and a Confirmation Service Event on Sunday, October 24.

## Financial Update – As of September 30, 2010



Total Income Received: \$413,355  
 Expenses to Date: \$ 430,953

We Are **Behind By** \$ 17,599  
 This deficit has been reduced from the prior month.

We want to thank everyone for helping to reduce the deficit that we had at the end of August. We are still behind where we were budgeted to be and several programs have been postponed as a result.

Thank you for your ongoing partnership in Good Shepherd’s ministry.

## Giving Thanks with a Grateful Heart!

Commitment Sunday was on October 24.



If you have not returned your Response Card, you may do so by leaving it in Skip Schaeffer’s mailbox by the church office, placing it in the offering plate or dropping it in the mail to Good Shepherd.

Thank you very much!

## NCD - NATURAL CHURCH DEVELOPMENT



The NCD process is underway at GSLC! Back in August, the council made a decision to begin a 12-18 month journey that will help us celebrate our strengths as a congregation, and enable us to identify our minimum strength point.

Between 30-50 of our church members will be asked to take a survey on November 14 that will measure us on the Quality Characteristics of Growing Congregations.

Which of the following will achieve the highest score? the lowest?

- ✓ *Empowering Leadership*
- ✓ *Gift-oriented Ministry*
- ✓ *Passionate Spirituality*
- ✓ *Functional Structures*
- ✓ *Inspiring Worship*
- ✓ *Holistic Small Groups*
- ✓ *Need-Oriented Evangelism*
- ✓ *Loving Relationships*

In January, when we receive the results, we will add three members to our NCD Health Team and set up focus group sessions to give all of our church members an opportunity to provide feedback to the team. This information will help us develop an Action Plan so we can move forward and grow in our ministries and mission.

This tool has been used by many congregations throughout the world with much success. We look forward to sharing our progress as we begin this work.

For more information, please see our “Health Team” members: Dan Groth, Jan Schnitzlein, and Janine Shugan (chair).

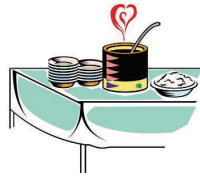


Thank you to the 24 people who rolled up their sleeves at the Property Workday on October 23.

## Caring for Others

### Women Serving Women Date Change!

Saturday, December 11  
11:30AM -1:30PM



**Women Serving Women** is a program of Raritan Valley Habitat for Humanity (RVHFH) that provides the opportunity for women (who perhaps don't feel comfortable building for various reasons) to get involved with Habitat and visit a build site by providing and serving lunch for the participants and crew of a Women Build Workday. Those serving lunch get to meet women from partner families, participant builders and get a tour of the site.

Women from GSLC will be providing lunch on Saturday, December 11. Sign up on the kiosk to make a hot main dish, sandwiches, dessert or salad and come help serve the women, meet the partner families and tour the site. This is a great mother-daughter experience. (Girls ages 13 and up are welcome).

This was lots of fun last year, just ask any of the GSLC folks in the picture! Sign up on the kiosk.

### Follow-up on Clothing Drive for Maria Farfan!



On September 18 we held a clothing drive to raise funds for Maria's ongoing medical expenses. What a success! Holding the clothing drive at two locations, GSLC and Hillsborough, maximized our exposure to the community. Over 21,000 pounds of clothing and other items were collected, resulting in a check from A&E Clothing Company of almost \$3,700. Combined with the matching grant from Thrivent Financial for Lutherans of \$1,200 and generous gifts from members of Good Shepherd, we were able to send \$6,300 to the Hatto/Farfan family to help pay Maria's ongoing medical expenses.

In 2006, at the age of 7, Maria, daughter of one of our original Daycare teachers, was diagnosed with a rare form of T-cell lymphoma. Maria has undergone years of chemotherapy, radiation and physical therapy. On May 10, 2010 with her cancer in remission, Maria received a bone marrow transplant at the Children's Hospital of Philadelphia to correct cell damage from the years of treatments. Throughout her entire ordeal, Maria has never lost faith that God will take care of her. She has been an inspiration to us all.

Thank you, thank you, thank you!

### Have You Voted your Thrivent Choice \$\$\$\$ Yet?



Thrivent Financial for Lutherans introduced a new program, Thrivent Choice® in 2010 in lieu of their Care in Congregation® and Giving Plus® programs. As the name implies, it's designed to give members a voice in how Thrivent Financial distributes some of its charitable outreach funds each year.

Thrivent Choice® has two components, one of which allows you, the benefit member, to vote how you want Thrivent dollars allocated. Eligible members should be receiving letters this month providing details on how to participate.

To find out how much has been allocated to you and to vote your dollars, visit [www.Thrivent.com/choicedollars](http://www.Thrivent.com/choicedollars) and log in at the top right corner. Not registered on Thrivent.com or don't have access to a computer, then call 1-800-THRIVENT (800-847-4836) and say "Thrivent Choice."

If you didn't receive a letter and you think you should have, please call your local Thrivent financial representative or stop by the Thrivent Choice information table on **Sunday, November 14th in the Narthex.**

Thrivent Choice® dollars allocated to Good Shepherd will be used to upgrade the facilities in Luther Hall including the *sound system, audio visual and lighting*. You can also vote your dollars to support our Daycare ministry by selecting Good Shepherd Christian Daycare.

## OPPORTUNITIES TO HELP AT LYONS VA



**November 6** - Report at 9:30 AM  
Pancake breakfast

**November 11**-Report for duty at 1:30 PM  
Bingo - Assist veteran patients in managing Bingo cards.

Both events will result in sheer joy for both patient and steward.

For any questions contact Ed Kunkel.

## COATS 4 VETS



Girl Scout Victoria Weniger, of Troop 61095, is collecting coats for the Veterans at the VA Hospital in Lyons. This summer she learned that many of the men who live at the VA are unable to go outside during the winter months because there are not enough coats for them to wear. Therefore, she decided that collecting gently worn men's coats would be the project for her Silver Award.

If you have a gently worn men's coat and would like to donate it to the VA Hospital, please drop it off here at Good Shepherd between now and November 28. There will be a box located in the Narthex decorated with the sign COATS4VETS. If you would like a pick-up at your house, please contact Victoria.

## Interfaith Hospitality Network—IHN *Ministry to the Homeless*



**We will host IHN guests the week of  
November 7-13**

Check the kiosk for opportunities to help.

IHN provides shelter, meals, and support services to families without homes through a cost-efficient and effective community response to family homelessness.

Coordinator—Bill Jonat

## Arbor Glen Worship

We gather in the Holly Center to share the Word, praise the Lord in song and give thanks in prayer.



**Sundays, November 14 & December 12, 1:15 PM**

Sign up on the kiosk if you can help.

Coordinators: Janice Reinhardt and Sandy Alexander

## Sharing Our Gifts



The Somerset County Chaplaincy to the Elderly (SCCE) is one of the many ministries we help to support through our offerings.

Through their efforts, regular chaplaincy services are freely given to residents in Somerset County eldercare facilities not being serviced by another agency. More than a thousand persons for whom these care facilities have become home are served. SCCE also supports and enhances the role of caregivers who provide the care for our elderly.

This not-for-profit organization was founded in 1975. It is locally based, autonomous, and ecumenical and governed by an all volunteer Board of Directors, composed of both clergy and lay persons.

The regular presence of a chaplain, one or more times a week, assures residents that they are not forgotten. Such continuity enables the chaplain to become someone the residents can depend on and turn to for support and comfort.

## Community Groups

Meeting at Good Shepherd

AA on Mondays, 8:00–9:00 PM

ESL (English as a Second Language)

Tuesdays and Thursdays, 9:30–11:30 AM

Contact Hunterdon County Educational -

Services Commission at 908-806-2795.



## Caring for God's Earth — Be the Solution

A message from the Environmental Team

## Refrigerator/Freezer Recycling Program

Recycling your old refrigerator or freezer, you can receive \$50.00. Arrange for a free pick up at 877-270-3520, JACO Environmental or schedule online at [www.jacoinc.net](http://www.jacoinc.net). They will recycle the units through a process returning 95% of the material into the manufacturing stream and safely extract toxic components found inside refrigerators (contaminated cells, mercury and CFC's) that deplete the ozone layer and accelerate global warming.

(Continued on page 8)

## Sunday Mornings

9:45 – 10:45 AM  
(childcare available)



- Nov. 7 Marcus Borg
- Nov. 14 Fredrick Buechner, led by Linda Walker
- Nov. 21 Dietrich Bonhoeffer, led by Don Stiger

Advent Bible Study - "A Messiah Foretold"

- Nov. 28 Advent I – Habakkuk - Hope for the future promised to God’s people
- Dec. 5 Advent II – Zephaniah – Affirms the power of God’s claim to rule in Israel and the world.

## Saturday Book Discussion

Dan Groth, Cathy Hunter and Don Stiger continue to lead stimulating conversations.



Next book: A novel by Marcus Borg - "Putting Away Childish Things—A Tale of Modern Faith." The author weaves his insightful teachings in Christianity into a new form - fiction.

Join us on **Saturdays, November 6 and 13, 9:30-11:00 AM.**

Looking Ahead: Our next book in January - for those who want to get a head start - "Letters from Prison" by Dietrich Bonhoeffer.



## diakonia

A 2-year spiritual formation and theological education to deepen your faith.. Ongoing 12-courses, of 5 sessions each.

New course begins **Tuesday, November 2, 16, 23, 30 at 7:00 PM and Saturday, December 4 at 9:30 AM**

Practical Ministry—Visitation

Taught by Rev. Jill Collicot and Rev. Don Stiger

Openings available - contact Joan Grace if interested.

Diakonia Annual Retreat for students and alumni

Friday-Saturday, **November 12-13**

at Villa Pauline, Mendham.

Come for all or part of the program.

Topic: "My Father's House Has Many Mansions"

Guest speaker, Sister Annelle Fitzpatrick, CSJ, Ph.D. of St. John University

"...to equip the saints for the work of ministry, for building up the body of Christ" (Ephesians 4:12)

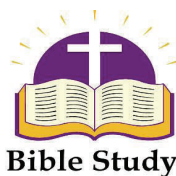
## BIBLE STUDIES

**Thursday mornings at 10:00 AM**

- Nov. 4 at Evelyn Kruck's home
- Nov. 11 at Lynn Wirth's home
- Nov. 18 at Joan Bowden's home
- Dec. 2 to be announced

Currently studying the book of Mark.

Coordinator: Jeanne Locke



**Bible Study**

**Wednesday afternoon at 1:00 PM.**

Drop in when you can—Come as you are.

Currently studying the Old Testament Book of Numbers.

Coordinator: Joan Grace

## Refrigerator/Freezer Recycling Program

A message from the Environmental Team



(Continued from page 7)

The Refrigerator/Freezer Recycling Program is not a traditional rebate program since there is no purchase of a new appliance necessary. You can also save \$150 a year on energy costs.

To participate in this program:

- You must be NJ resident and customer of Atlantic City Electric, Jersey Central Power & Light, or PSE&G.
- You must own the refrigerator or freezer being recycled.
- The item must be 10 to 30 cubic feet in size.
- It must be in working condition.
- Limit two units per household.
- Restrictions may apply.
- Incentives are processed within 90-120 days.

On average a newer refrigerator or freezer consumes 1,000 fewer kilowatt hours annually than a refrigerator or freezer manufactured before 1990.

Recycling 20,000 older refrigerators or freezers will result in energy savings equal to the amount of power used in approximately 1,400 homes annually.

Recycling 20,000 older refrigerators or freezers would result in the avoidance of CO2 emissions equal to removing 40,000 cars from the road for one year.



**Women of the ELCA at Good Shepherd**

**Sisters of Ruth**

This group will not meet in November. In December they will meet with 60 +ers for their Holiday Lunch at Russo’s (see page 10)

Coordinator: Sandy Alexander

**Daughters of Eve**

Informal gathering with a focus on women’s issues and outreach projects.

Join our email list to get up-dates by placing your name and email info in either Pat or Joan’s mail slot at church.

**Wednesday, November 3, 7:30 PM**

Service Project at Joan Grace’s home

- Children’s Hospital of Philadelphia -
- Assemble kits for parents. Please bring travel size toiletries to the meeting or drop them off at church beforehand.
- Feeling crafty, you can decorate messages of hope to include in the kits or make ornaments for college care packages. Or come just to talk.

**Thursday, December 2, 2:00 PM, at church**

Assemble final exam care packages for college students at church. See page 4 for information. Call Maureen DeMarco if you can help that day.

**Daughters of Eve—continued**

Reservations are needed by November 3 for. Holly Trail House Tour

**Saturday, December 4, 8:00 AM**

- Meet at church to carpool.
- When we arrive at Round Valley, a bus will take us to the Stanton Reformed Church and then we’ll be bused to the different houses.
- You can get off, tour a house staying as long as you like, and board the next available bus.
- While we enjoy the day, several charities will be benefactors – Stanton Reformed Church and Hunterdon Medical Hospital.
- Lunch is included, held at the Stanton Reformed Church. There is a gift shop area at the church.
- Cost is \$42, includes tour and lunch. This is non-refundable, but you can transfer it to someone else.
- Joan Grace will be collecting monies and getting tickets - make checks payable to her.

Coordinators: Pat Whitehead and Joan Grace

**Mark Your Calendars Now!!**

Women’s Retreat - Mark Your Calendar Now

**Friday, April 1 – Saturday, April 2, 2011**

“Savor the Moment”

At Crossroads Outdoor Ministries  
A new Adult Retreat Center.

For all GSLC Women and friends.

Registration materials will be available January 2011.

| Prayer Shawl Ministry  | Shepherd Stitches  | Crafters  |
|--|--|---|
| <p><b>Saturdays, November 6 and December 4 at 10:00 AM</b></p> <p>Knitting and crocheting shawls for the sick, grieving and homebound as a tangible symbol of our prayers, love and concern.</p> <p>For info, contact Connie Zylman.</p> | <p><b>Mondays, 6:30 PM<br/>November 1 &amp; 15, December 6 &amp; 20</b></p> <p><b>Tuesdays, 1:00 PM<br/>November 2 &amp; 16, December 7 &amp; 21</b></p> <p>Creating quilts and other projects to share with others around the world.</p> <p>For info, contact Janice Brunsbach.</p> | <p><b>Meets Wednesdays, 9:30 AM<br/>Year-Round</b></p> <p>Creating mementos celebrating events in our church family.</p> <p>Join us on Wednesday mornings -or- create at your leisure at home.</p> <p>For info, contact Joan Grace.</p> |
| <p style="text-align: center;"><b>All are welcome to participate in any or all of these groups.<br/>No experience necessary<br/>All supplies and instruction provided.</b></p>   |  |   |



**Lutheran Men in Mission**

All men are welcome to join us for breakfast and interesting discussions.



**Saturdays, November 6 & 20, December 4 & 18**  
**7:30 AM in Luther Hall**

We will be sponsoring the Christmas toys collection for children of Somerset County jail residents (page 4).  
 Coordinator: Dean Levin

**Sign60+ers**

Join us for good fellowship, interesting programs and refreshments.



**Wednesday, November 10**

WOW! 60 Plussers to take 2nd Journey with Paul without a plane fare. Forget the airport hassles and join the 60 Plussers on November 10 at 1:00 PM for an exciting presentation by Bonnie and Ed Gould on their Greek expedition retracing the footsteps of Paul on his missionary journey

**Wednesday, December 8 at 12:00**



Holiday Lunch at Russo's  
 Cost is \$29 per person  
 Entertainment by a Barbershop Quartet.  
 Sign-up will be on the kiosk.

Coordinator: Marilyn Mountjoy



**Main Street Ministry**

sponsored by Good Shepherd

**Monday, November 15 at 7:00 PM.**

At Alfonso's on Main Street in Somerville for pasta and conversation - "Are you caught in the Middle?"

**Looking for a place where you can talk about things that matter?** This may be for you.

If you can join us, text Linda at 908-451-5339,

or email [Linda@gslutheranchurch.org](mailto:Linda@gslutheranchurch.org)

**Hunterdon Hills Playhouse Lunch and Show**

**Wednesday, November 17**

Carpool from church at 10:30 AM



It's not too late to sign up or invite a friend. Sign up on the kiosk with your lunch selection. Cost is \$56. Please make checks out to Good Shepherd Lutheran Church and place in Susan Capetta's mailbox or give to Millie Kunkel.



**Christian Day Care and Pre-School**  
**NAEYC Accredited**

In October, the children enjoyed "Trunk or Treating", had a costume parade, We also celebrated Fire Prevention Week in all the classrooms.

Our traditional Thanksgiving feast is scheduled in November. We continue to be thankful for all the volunteers who spend time with us:

- Ms. Linda Walker
- Ms. Judy Pfister, our gardener
- Ms. Nancy, librarian from Somerville library
- Ms. Cindy Chomiak, our cooking teacher

We continue to grow in enrollment and we are truly thankful for that!

We have limited openings for our regular daycare program, as well as our Before and After School program (for Adamsville children only), or available to those who can provide transportation to/from the Center.

If you have any questions about our programs, please call Anjali or Pat at 908-704-0080 or [daycairedir@gslutheranchurch.org](mailto:daycairedir@gslutheranchurch.org)

**Little Lights**

A Playgroup for Young Children and Their Caregivers

**NEW MEETING DAY AND TIME!!!**

**Thursdays at 3:30-5:00 PM!**



Join our email list to find out weekly meeting location!

[littlelights@gslutheranchurch.org](mailto:littlelights@gslutheranchurch.org)

Let Your Light Shine! Heather Gliot

Children and Youth share your gifts and talents

Help us proclaim the Good News of Christ's Birth



**Love Came Down at Christmas**

*A Special Christmas Eve Service for Children, Youth, Families and Friends*

**Friday, December 24 at 5:00 PM**

Sunday Church School Students in Beginners thru Sixth Grade are encouraged to participate as Biblical Characters, Stable Animals, Readers, Worship Assistants and more. Flyers with rehearsal information and registration forms will be mailed in November.



**HEAD TO THE HEART (H2H) CONFIRMATION MINISTRY**

**H2H Ministry Schedule**

**7<sup>th</sup> Grade**

H2H Lessons and Discussion for Youth  
Sundays, 9:45 – 10:45 AM  
November 7, 14, 21 and December 5, 12, 19

H2H Parent/Guardian Small Group Gatherings  
Sundays, 9:45 – 10:45 AM  
November 21 and December 19

**8<sup>th</sup> and 9<sup>th</sup> Grade**

H2H Lessons and Discussion for Youth  
Wednesdays, 7:00 – 8:30 PM  
November 3, 17 and December 1, 15

H2H Parent/Guardian Small Group Gatherings  
Wednesdays, 7:00 – 8:30 PM  
November 3, 17 & December 1, 15

**H2H Ministry Small Group Guide's Huddle**

Wednesday, November 10, 7:00 – 8:30 PM

**Servant Learning Events**

Grade 7 Advent Wreaths  
Saturday, November 27, 6:00 – 8:00 PM  
Pizza, Preparation and Set up

Sunday, November 28, 9:00 – 11:30 AM  
Wreath making activity and clean up

Grade 7 and 8  
Toy Shopping for Somerset County Jail Residents  
Sunday, December 5, 6:30 – 8:30 PM

Grade 9 Angel Tree Gift Shopping  
Sunday, December 5, 6:30 – 9:00 PM

**H2H Fellowship Events**

Grades 7, 8 & 9  
Decorate the Church  
Sunday, December 19, 2:30 – 4:30 PM

Living Nativity  
December 18, 5:00 – 9:00 PM See page 3 for ways to help and presentation times.

**H2H Enrichment and Spiritual Growth**

Grades 7, 8 & 9  
NJ Synod Jr High Retreat, Among the Wolves  
Friday thru Sunday, November 19 – 21  
Carpool at GSLC Friday, November 19 at 4:00 PM  
*(Participation in this event is encouraged but not required)*



**Sr High Youth Ministry for Youth in Grades 10—12 and Friends**

Sunday, November 14, 6:00 – 8:30 PM  
Bowling and Pizza at Manville Lanes  
Cost: \$20 (approximately)  
Meet at GSLC to carpool  
Drivers needed (age 25+)  
Permission slips on the youth bulletin board

Sunday, December 12, 6:30 – 8:30 PM  
Game Night  
Bring your favorite board game or cards  
Invite a friend  
Bring a snack and drink to share

Saturday, December 18—Living Nativity  
See page 3 for ways to help and presentation times.

Sunday, December 19, 2:30 – 4:30 PM  
Decorate the Church Fellowship Event  
Come help us decorate and prepare the church for Christmas  
Cookies & Hot Chocolate

Looking Ahead:  
NJ Synod Sr High Winter Youth Assembly  
Friday thru Sunday, February 18 – 20



**In Our Thoughts and Prayers**

- † Gissela Bodnar
- † Joan Bowden
- † Amy DeGirolamo
- † Lorenzo DeGirolamo
- † Linda Froehlich
- † Loretta Grace
- † Marilyn Kerr
- † Joe Kmet

- † April Newton-on disability
- † Christian Schaeffer
- † Gail Velcheck
- † Amy Wacker
- † Catherine Young and family,  
grieving the death of Catherine's  
sister, Carol
- † Kay Young

**Homebound Members**

- † Louise Baldwin
- † Emily Blenderman
- † Frieda Connor
- † Ruth Lombardy
- † Andrew Martiny
- † Nancy Mastrianni
- † Arlean Meck
- † John Wills



Births in the Church Family

- † Paul Christopher Fuson, born September 23, 2010.
- † Nadia Marie, John and Jen Ruggini's baby and Pam Ruggini's granddaughter, born September 25.

**PLEASE PRAY FOR OUR CHURCH FAMILY ON THEIR BIRTHDAYS**

|      |  |       |   |       |  |
|------|--|-------|---|-------|--|
| 11/1 | Tammy Giraldi<br>Ellen Mone<br>Kristin Carriel<br>Autumn Esler | 11/10 | Arlene Reinhardt<br>Glen Denys                                | 11/23 | Sydney Whaley  |
| 11/3 | Joy Johnson<br>Cindy Dilks<br>Allison Macher<br>Emma Swider    | 11/12 | Dave Wirth  | 11/24 | Tiffani Taylor-Jenkins   |
| 11/4 | Amber Kozloski<br>Tyler Magrosky                               | 11/13 | Margaret Liska<br>Judy Miller                                 | 11/25 | Jan Schnitzlein<br>Bill Laruffa<br>Caitlin Syage<br>Jason Fenyar                                 |
| 11/5 | Audrey Temple<br>Heidi Bodnar                                  | 11/14 | Ruth Mengak   | 11/26 | Joyce Jonat<br>Bryan Davis   |
| 11/6 | Edna Hikes<br>Rick Shelcusky<br>Leigh Pietz                    | 11/16 | Matthew Helm  | 11/27 | Marilyn Mountjoy   |
| 11/7 | John Esler   | 11/17 | Ellen Sapiezynski<br>Kaden Arnold                             | 11/28 | Nancy Macher<br>Greg Reinhardt   |
| 11/8 | David Mountney<br>Rebecca Bowser                               | 11/18 | Christopher Chomiak<br>Maryanne Gabbett<br>Alice Simko        | 11/29 | Mel Schroeder<br>Louis Zaroni<br>Debbie Cirillo<br>Wayne DeMarco<br>Steve Scholl<br>Brian Gyeski |
| 11/9 | Bea Allen<br>Joel Marlin<br>Eric Shugan                        | 11/19 | Joyce VanVooren<br>Lucas DeGirolamo<br>Lorenzo DeGirolamo     | 11/30 | Nadine Messner<br>Jason Lilly<br>Christian Schaeffer<br>Shayna Blackwood<br>Lily Chang           |
|      |  | 11/20 | Howard Wynn<br>Debra Ashrafi<br>Ella Benson<br>Jason Barnoski |       |  |
|      |  | 11/21 | Daniela Johnson<br>Aayden Walters                             |       |  |
|      |  | 11/22 | Sue Yarus<br>Erik Marlin<br>Paul Kanyuch                      |       |  |

**If your November birthday is incorrect or not listed here, please call the church office. Thanks.**

## November 2010

| Sunday  | Monday  | Tuesday   | Wednesday   | Thursday  | Friday   | Saturday  |
|---|---|---|---|---|--|---|
|   | <b>1</b><br>6:30pm Shepherd Stickers  | <b>2</b><br>ELECTION DAY<br>1:00pm Shepherd Stickers<br>7:00pm Diakonia<br>7:30pm Finance Ministry Team | <b>3</b><br>9:30am Crafters<br>1:00pm Bible Study<br>7:00pm H2H Confirmation Gr. 8-9<br>7:00pm H2H Parents of Gr. 8-9<br>7:30pm Daughters of Eve @ J. Grace's<br>7:30pm Grace Alive! Instrumental Rehearsal   | <b>4</b><br>10:00am Bible Study @ E. Kruck's<br>3:30pm Little Lights<br>7:45pm Choir Rehearsal  | <b>5</b>   | <b>6</b><br>7:30am LMM Breakfast<br>9:30am Lyons VA Pancake Brkfst.<br>9:30am Book Discussion<br>10:00am Prayer Shawl Ministry          |
| <b>7</b><br>FALL BACK - turn clocks back 1 hour @ 2:00 AM<br>IHN<br>8:15am Worship<br>9:30am Prayers of Rememb. Memorial Garden<br>9:45am SCS/Adult Forum<br>9:45am H2H Confirm. Gr 7<br>11:00am Worship<br>12:15pm New Member Class<br>4:00pm Compassionate Care Hospice Memorial Service                                  | <b>8</b><br>IHN   | <b>9</b><br>IHN<br>7:30pm Council   | <b>10</b><br>IHN<br>9:30am Crafters<br>1:00pm 60 Plusers<br>1:00pm Bible Study<br>7:00pm H2H Confirmation Huddle<br>7:15pm Adult & Family Team<br>7:30pm Grace Alive! Rehearsal   | <b>11</b><br>IHN<br>10:00am Bible Study @ L. Wirth's<br>1:30pm Lyons VA Hosp. Bingo<br>3:30pm Little Lights<br>7:45pm Choir Rehearsal | <b>12</b><br>Diakonia Annual Retreat<br>IHN  | <b>13</b><br>Diakonia Annual Retreat<br>IHN<br>9:30am Book Discussion   |
| <b>14</b><br>IHN leaves in AM<br>New Members Received<br>Newsletter Deadline<br>Prayers 4 Heal./Sending Comm. Ministers<br>8:15am Worship<br>9:45am H2H Confirm. Gr 7<br>9:45am SCS/Adult Forum<br>11:00am Worship<br>12:30pm Small Group Leader Training<br>1:15pm Arbor Glen Worship<br>6:00pm Gr 10-12 Bowling, Manville | <b>15</b><br>6:30pm Shepherd Stickers<br>7:00pm Main St. Ministry, Alphonso's | <b>16</b><br>1:00pm Shepherd Stickers<br>7:00pm Diakonia  | <b>17</b><br>9:30am Crafters<br>10:30am 60+ers meet @ GSLC-carpool to Hunterdon Hills<br>1:00pm Bible Study<br>7:00pm H2H Confirmation Gr. 8-9<br>7:00pm Stewardship/Social Ministry Team<br>7:00pm H2H Parents of Gr. 8-9<br>7:30pm Day Care Team<br>7:30pm Grace Alive! Rehearsal | <b>18</b><br>10:00am Bible Study @ J. Bowden's<br>3:30pm Little Lights<br>7:45pm Choir Rehearsal                                      | <b>19</b><br>NJ Synod Retreat-Among The Wolves<br>4:00pm Gr. 7-8-9-Carpool to LBI-Among The Wolves | <b>20</b><br>NJ Synod Retreat-Among The Wolves<br>7:30am LMM Breakfast<br>9:00am Food Basket Assembly/Delivery<br>3:00pm Choir Workshop |
| <b>21</b><br>NJ Synod Retreat-Among The Wolves<br>8:15am Grace Alive! Worship<br>9:45am SCS/Adult Forum<br>9:45am H2H Confirm. Gr 7<br>9:45am H2H Gr. 7 Parents<br>11:00am Grace Alive! Worship   | <b>22</b>   | <b>23</b><br>7:00pm Diakonia  | <b>24</b><br>9:30am Crafters<br>1:00pm Bible Study<br>7:30pm Thanksgiving Eve Worship Service<br>8:30pm Pie Nite  | <b>25</b><br>THANKSGIVING DAY - Church Office Closed  | <b>26</b><br>Church Office Closed  | <b>27</b><br>6:00pm H2H Confirm. Gr. 7 Advent Wreath Prep/Pizza   |
| <b>28</b><br>8:15am Worship<br>9:30am Advent Wreath Making<br>9:45am Adult Forum<br>11:00am Worship   | <b>29</b><br>7:30pm SCS Teachers Faith Formation                              | <b>30</b><br>7:00pm Diakonia  |   |   |  |   |

**Worship Steward Schedule - December 2010**

|                                    |       | <b>December 5, 2010</b>   | <b>December 12, 2010</b>  | <b>December 19, 2010</b>   | <b>Fri., Dec. 24<br/>Christmas Eve</b>  | <b>December 26, 2010</b>           |
|------------------------------------|-------|---|---|--|---|------------------------------------|
| <b>Acolyte</b>                     | 8:15  | Emily Duque   | Grace Schwiederek   | Rachel Eilers  | <b>See next page for Christmas Eve<br/>worship steward schedule.<br/>Volunteers are needed.</b> |                                    |
|                                    | 11:00 | Eric Shugan   | Amanda Velcheck   | Trevor Achey   |   |                                    |
| <b>Altar Guild</b>                 | 8:15  | Joan Grace, Rosely LaFever,<br>Pat Whitehead                                | Maureen DeMarco, Myla<br>Groth, Pam Ruggini                         | Jenn Haff, Pam Ruggini, Ellen<br>Sapieznyski                             |   | Pam Ruggini, Ellen<br>Sapieznyski, |
|                                    | 11:00 | Alice Cotton, Margaret<br>Cotton, Millie Kunkel                             | Ruth Mengak, Gail Treible,<br>Connie Zylman                         | Alice Cotton, Margaret Cotton,<br>Sandy Alexander                        |   | Sandy Alexander,                   |
| <b>Communion<br/>Assistant</b>     | 8:15  | Jeff Davis, Frank Henrikson,<br>Christine Peterson-Duque,<br>Charlie Thieme | Nancy Davis, Jenn Haff,<br>Amanda Rochow, Diane<br>Thieme           | Joan Grace, Susan Horensky-Star,<br>Kevin Whitehead, Nancy<br>Waltermire |   |                                    |
|                                    | 11:00 | Marie DeMaria, Marisa<br>Gallicchio, Mary Lou<br>Gorman, Janice Reinhardt   | Mary Lou Gorman, Donna<br>Fuller, Brenda Linton,<br>Darlene Pierson | Sandy Alexander, Richard<br>Alagona, Evelyn Kruck, Janice<br>Reinhardt   |   |                                    |
| <b>Nursery</b>                     | 8:15  | Kelly Gabbett   | Michael Schaeffer   | Andrew Puntillo  |   | Cindy Schwarz                      |
|                                    | 11:00 | Carlee Ahart  | Kim & Zoe Andrews   | Alayna Fuller  |   |                                    |
| <b>Offering Bread and<br/>Wine</b> | 8:15  | Buck & Rosely LaFever   | Mel & Betty Schroeder   | Mike & Nancy Macher  |   |                                    |
|                                    | 11:00 | Lois Ringler, Darrell Ringler   | George & Eley Shampamore  | Scholl family  |   |                                    |
| <b>Reader</b>                      | 8:15  | Carl Schulz   | Don Stiger  | Charlie Thieme   |   | Nancy Waltermire,                  |
|                                    | 11:00 | Linda Rolando   | Janine Shugan   | Rob Shugan   |   | (2 readers needed at both svcs)    |
| <b>Refreshments</b>                | 8:15  | DeMarco family  | Ben Fieselmann, Lynn<br>Francesconi                                 | Joyce & Bill Jonat   |   |                                    |
|                                    | 11:00 | Kim, Rob, Zoe Andrews   | Sandy Alexander, Diane<br>Gorsky                                    | Gale Treible, Jim Murphy   |   |                                    |
| <b>Sound System<br/>Technician</b> | 8:15  | Myla Groth  | Joe Gorsky  | Rick Eilers  |   |                                    |
|                                    | 11:00 | Christian Gallicchio  | Ed Gould  | Markus Rieble  |   |                                    |
| <b>Usher Team</b>                  | 8:15  | Schwiederek Family  | DeMarco Family  | DeMarco Family   |   |                                    |
|                                    | 11:00 | Kevin Scholl, Leigh Pietz,<br>Glenn Pfister, Linda Rolando                  | Kevin Scholl, Leigh Pietz,<br>Glenn Pfister, Linda Rolando          | Kevin Scholl, Leigh Pietz, Glenn<br>Pfister, Linda Rolando               |   |                                    |
| <b>Welcome Team</b>                | 8:15  | Frank Henrikson, Skip<br>Schaeffer  | Sabrina Hepburn, Don Stiger   | Amanda & David Rochow  |   |                                    |
|                                    | 11:00 | Carrie & Brendan Rieble   | Florence White, Dave Wirth  | William Holden, Janice Reinhardt   |   |                                    |
| <b>Worship Assistant</b>           | 8:15  | Jenn Haff   | Bob Day   | Skip Schaeffer   |   | Skip Schaeffer                     |
|                                    | 11:00 | Brenda Linton   | Florindo Gallicchio   | Lisa Goldstone   |   | Ed Gould                           |
| <b>Bread Baker</b>                 |       | Bonnie Gould  | Sabrina Hepburn   | Edna & Bob Hikes   |   | Joan Grace                         |
| <b>Counting Team</b>               |       | Jill Weidner, Ruth Mengak,<br>Richard Alagona                               | William Holden, Nancy<br>Waltermire, Jim Murphy                     | Lowell Reinhardt, Charlene<br>Walker, Dorothy Morris                     |   | Bonnie Gould, Maureen Insua,       |
| <b>Flower Delivery</b>             |       | Janice & Lowell Reinhardt   | Sandy Alexander   | Lynn Wirth   |   |                                    |

**Please sign up on the kiosk to serve during the December 26 service.**

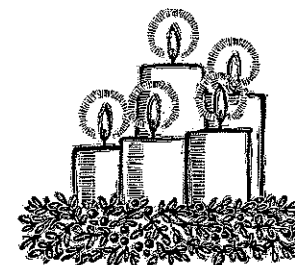
|   |                        |  |
|---|------------------------|--|
| <b>Acolyte</b><br>(2 acolytes needed at each service) | 5:00 PM                |  |
|   | 8:30 PM                | Joshua Fuller,                                 |
|   | 11:00 PM               |  |
| <b>Altar Guild</b>                                    | 5:00 PM                |  |
|   | 8:30 PM                | Connie Zylman, Margaret Cotton                 |
|   | 11:00 PM               | Millie Kunkel, Sandy Alexander                 |
| <b>Communion Assistant</b>                            | 5:00 PM                | Nancy Waltermire,                              |
|   | 8:30 PM                |  |
|   | 11:00 PM               | Sandy Alexander,                               |
| <b>Nursery</b>  | 5:00 PM                |  |
| <b>Offering Bread &amp; Wine</b>                      | 5:00 PM                |  |
|   | 8:30 PM                |  |
|   | 11:00 PM               |  |
| <b>Reader</b>   | 8:30 PM                | Ellen Parker                                   |
|   | 11:00 PM               | Nancy Waltermire                               |
| <b>Sound System Technician</b>                        | 5:00 PM                |  |
|   | 8:30 PM                | Ed Gould                                       |
|   | 11:00 PM               |  |
| <b>Usher Team</b>                                     | 5:00 PM                | Schweiderek family                             |
|   | 8:30 PM                | George Shampanore,                             |
|   | 11:00 PM               | Glenn Pfister,                                 |
| <b>Welcome Team</b>                                   | 5:00 PM                |  |
|   | 8:30 PM                |  |
|   | 11:00 PM               |  |
| <b>Worship Assistant</b>                              | 5:00 PM                |  |
|   | 8:30 PM                | Skip Schaeffer                                 |
|   | 11:00 PM               | Ed Gould                                       |
| <b>Bread Baker</b>                                    |                        | Joan Grace                                     |
| <b>Counting Team</b>                                  | after 8:30 PM Service  | Jill Weidner, Ruth Mengak, Richard Alagona     |
|   | after 11:00 PM Service | Bonnie Gould, Debbie Gelormine, Kathy Kuhblank |

Friday, December 24, 2010

## Christmas Eve

### Worship Stewards Needed

Please see the sheet on the kiosk and sign up for worship steward duties for upcoming Christmas services (or you may call the church office to sign up). This gives you the opportunity to choose when you would like to serve instead of being assigned, discovering you are unavailable, and then scrambling to find a substitute. Volunteers who have already signed up are listed here.



# TELEPHONE & STAFF DIRECTORY

## Church Office:

Telephone: 908-685-1660  
office@gslutheranchurch.org

Fax: 908-685-1667  
www.gslutheranchurch.org  
visit us on Facebook

|                              |  |         |                                  |
|------------------------------|--|---------|----------------------------------|
| The Rev. Christine A. Stiger | Pastor                                       | Ext. 11 |                                  |
|                              | <b>Emergency Pastoral Care: 908-334-7767</b> |         | Pastorchris@gslutheranchurch.org |
| Tania Ascencio               | Sunday Nursery Staff                         |         |                                  |
| Susan Capetta                | Office Administrator                         | Ext. 15 | Susan@gslutheranchurch.org       |
| Brian Dungey                 | Custodian                                    |         |                                  |
| Debbie Gelormine             | Senior Choir Director                        |         |                                  |
| Charles German               | Organist/Music Coordinator                   |         | Charles@gslutheranchurch.org     |
| Fred Mountjoy                | Parish Counselor                             | Ext. 17 |                                  |
| Lynda Pullis                 | Dir. Children & Youth                        | Ext. 21 | Lynda@gslutheranchurch.org       |
| Linda Walker, AiM            | Dir. Adult & Family                          | Ext. 14 | Linda@gslutheranchurch.org       |

## Good Shepherd Christian Day Care

Anjali Gadre Day Care Director

Telephone: 908-704-0080  
DayCare@gslutheranchurch.org

November 2010



ADDRESS CORRECTION REQUESTED

Good Shepherd Lutheran Church  
300 Union Avenue  
Somerville, NJ 08876

NONPROFIT ORG  
US POSTAGE PAID  
HILLSBOROUGH NJ  
PERMIT NO 124